

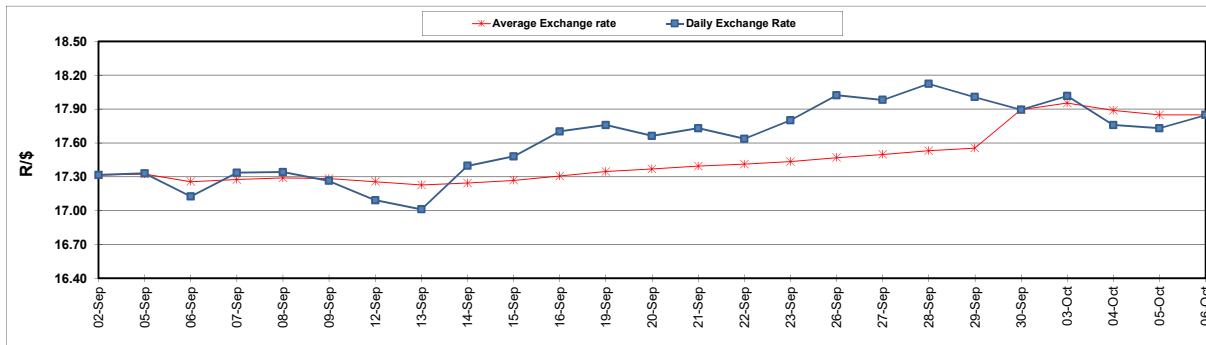
	PETROL 95 ULP	PETROL 93 ULP & LRP	DIESEL 0.05%	DIESEL 0.005%	ILL. PAR.
GAUTENG PUMP PRICE (SA c/l) AS FROM 05/10/2022	2,236.000	2,206.000	-	-	-
WHOLESALE PRICE (SA c/l) AS FROM 05/10/2022	-	-	2,406.100	2,430.500	1,699.288
SINGLE NATIONAL MAXIMUM RETAIL PRICE	-	-	-	-	2,240.000
BASIC FUEL PRICE - 06/10/2022 (SA c/l)	1,217.792	1,199.879	1,723.690	1,748.705	1,575.493
PRESS RELEASE CONTRIBUTION TO BFP 05/10/2022 - 06/10/2022 (SA c/l)	1,145.750	1,115.750	1,523.630	1,548.030	1,481.128
UNIT OVER/(UNDER) RECOVERY - 06/10/2022 (SA c/l)	(72.042)	(84.129)	(200.060)	(200.675)	(94.365)
AVERAGE BASIC FUEL PRICE 30/09/2022 - 06/10/2022	1,189.976	1,166.122	1,600.981	1,622.217	1,475.652
AVERAGE UNIT OVER/(UNDER) RECOVERY 30/09/2022 - 06/10/2022	16.974	3.028	(83.351)	(83.187)	42.076

ANALYSIS MOVEMENT OF AVERAGE OVER/(UNDER) RECOVERY

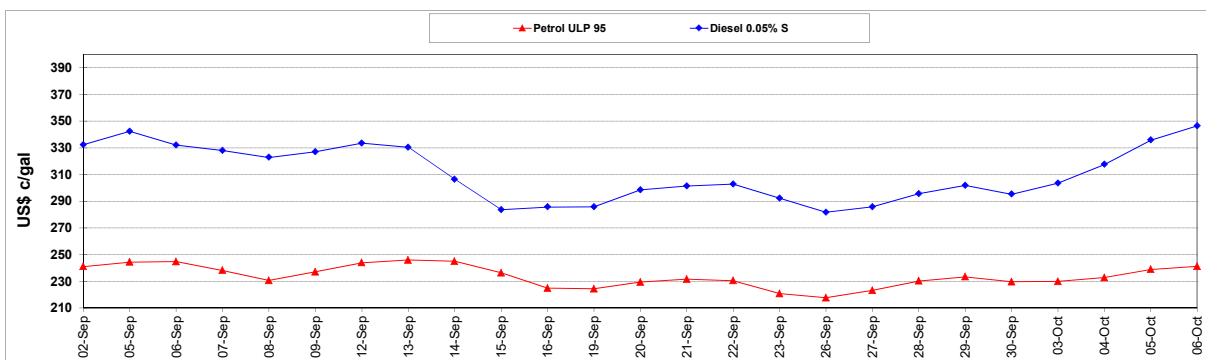
	PETROL 95	PETROL 93	DIESEL 0.05%	DIESEL 0.005%	ILL. PAR.
- MOVEMENT IN INTERNATIONAL PRODUCT PRICES	6.493	(7.243)	(97.452)	(97.475)	29.079
- MOVEMENT IN EXCHANGE RATE	10.481	10.271	14.101	14.288	12.997
AVERAGE UNIT OVER/(UNDER) RECOVERY 30/09/2022 - 06/10/2022	16.974	3.028	(83.351)	(83.187)	42.076

R/\$ EXCHANGE RATE - (R/\$17.8468 - 06/10/2022)

EXCHANGE RATE USED IN BASIC FUEL PRICE



INTERNATIONAL PRODUCT PRICES OF BASKET USED IN BASIC FUEL PRICE



BASIC FUEL PRICE IN SA CENTS PER LITRE

